

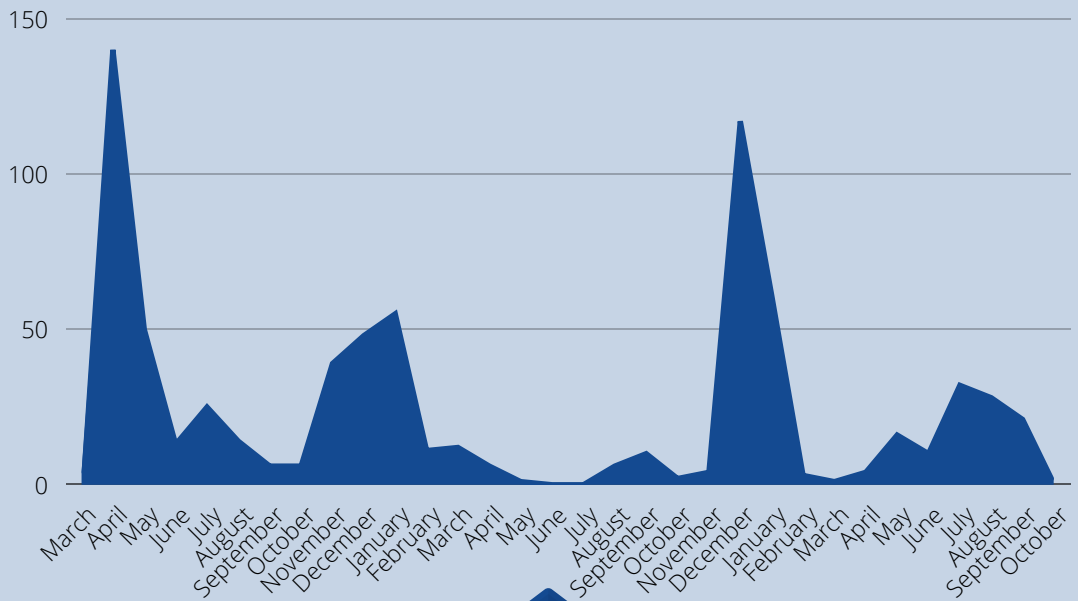
DDS COVID-19 DATA UPDATE

DATA COLLECTED FROM MARCH 2020 - OCTOBER 2022 ON PEOPLE RECEIVING SERVICES FROM DDS

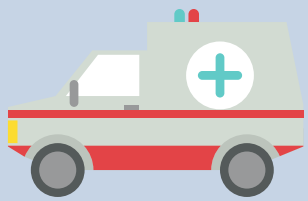
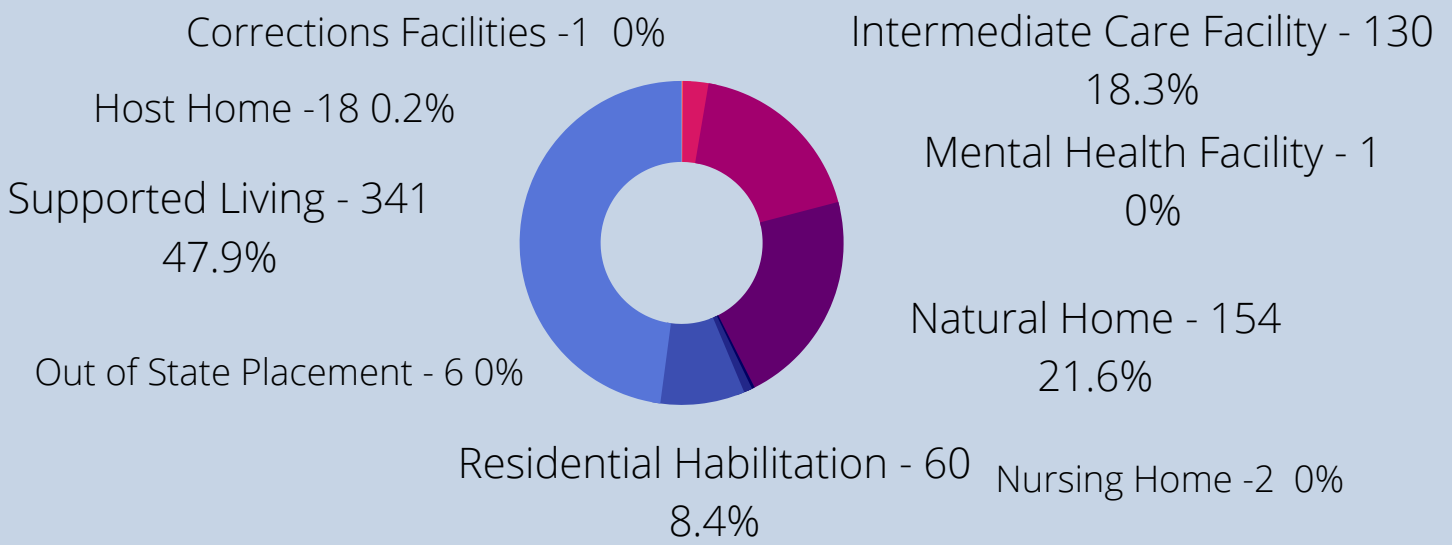


PEOPLE DIAGNOSED WITH COVID -19 BY MONTH

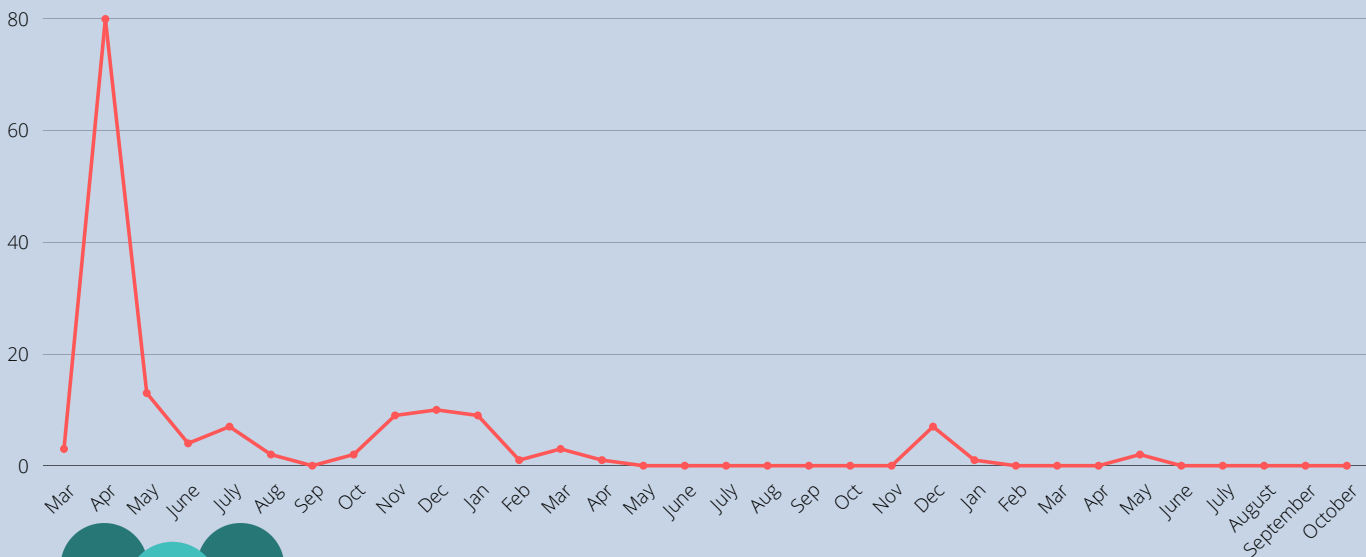
As of October 7, 2022, a total of 713 people receiving services from DDS were diagnosed with COVID-19.



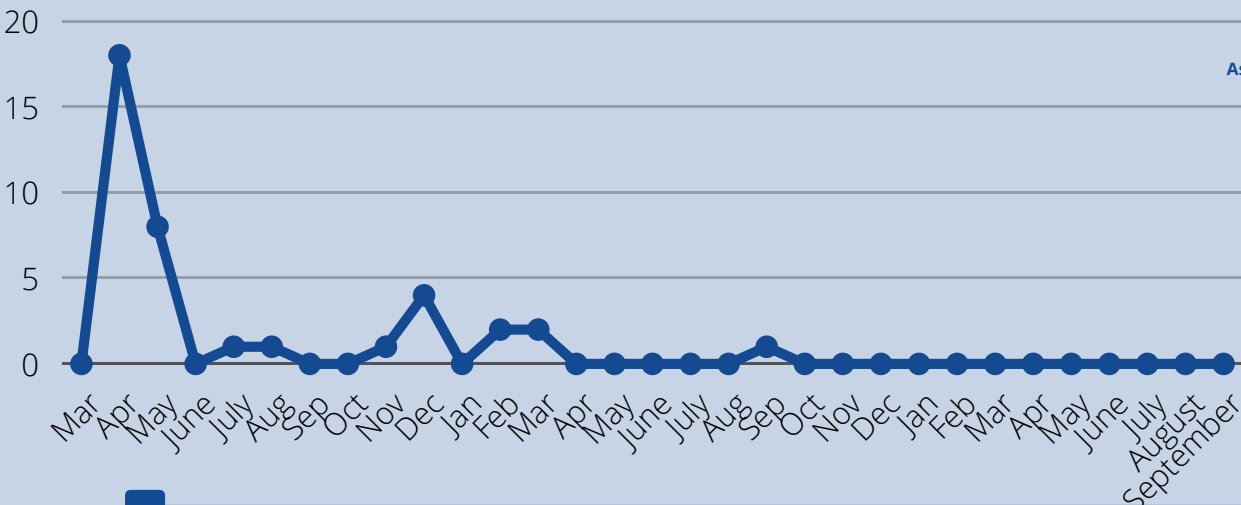
PEOPLE DIAGNOSED WITH COVID-19 BY PLACEMENT TYPE



PEOPLE WHO REQUIRED HOSPITALIZATIONS (N=144)



PEOPLE DIAGNOSED WHO HAVE CONFIRMED COVID-19 DEATH



As of October 7, 2022, a total of 38 confirmed COVID-19 deaths.

VACCINATION RATES

- People Supported by DDA – 88% (updated 10/07/22)
 - Host Homes – 98%
 - ICF – 99.23%
 - Natural Homes – 78%
 - Residential Habilitation – 100%
 - Supported Living – 94%
- Vaccination – Boosters – 78% (updated 10/07/22)
- Provider Staff – 90% (updated 10/07/2022)
- Provider Staff Eligible for Booster/Received Booster 70% (updated 09/22/2022)
- DDS staff - 98% (updated 09/22/2022); Received Booster – 90%

