

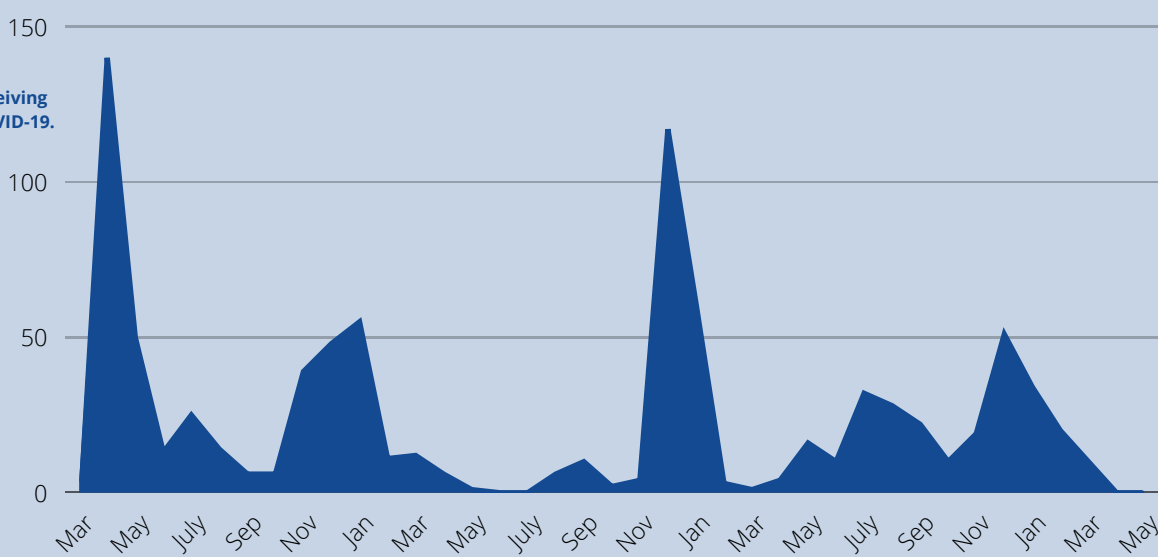
DDS COVID-19 DATA UPDATE

DATA COLLECTED FROM MARCH 2020 - MAY 2023 ON PEOPLE RECEIVING SERVICES FROM DDS

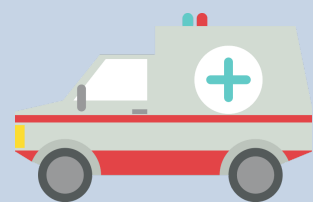
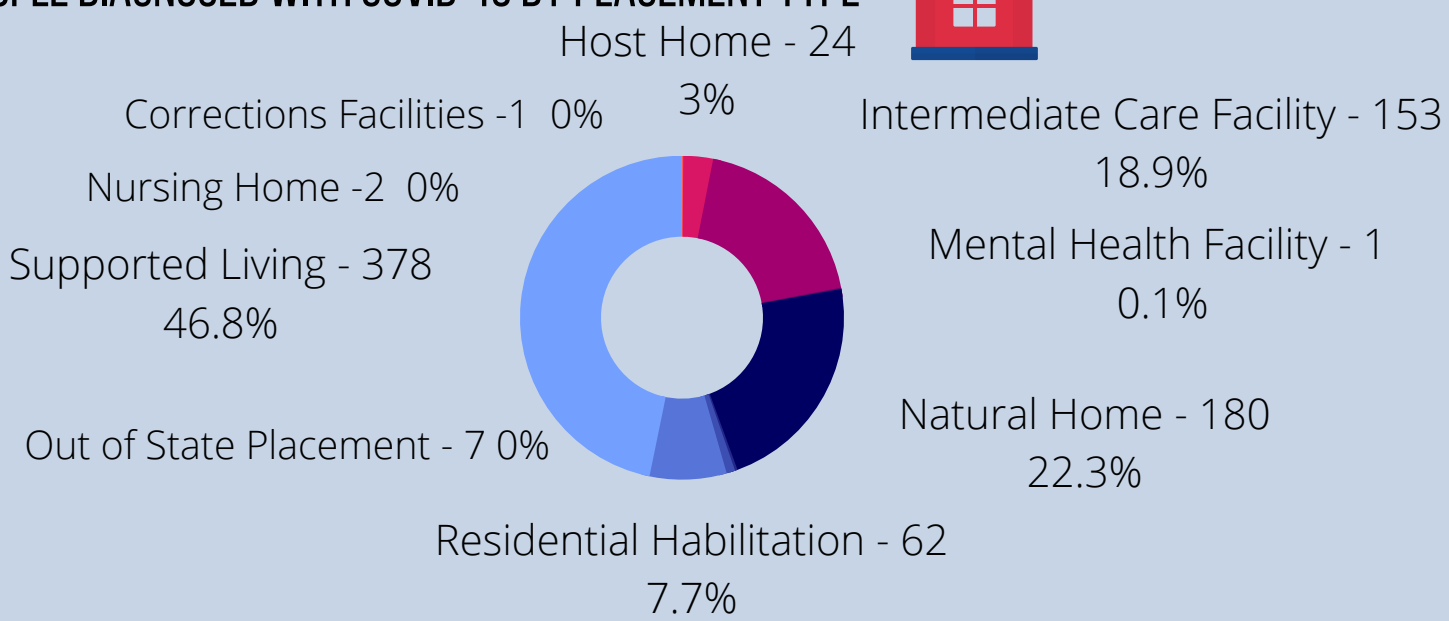


PEOPLE DIAGNOSED WITH COVID -19 BY MONTH

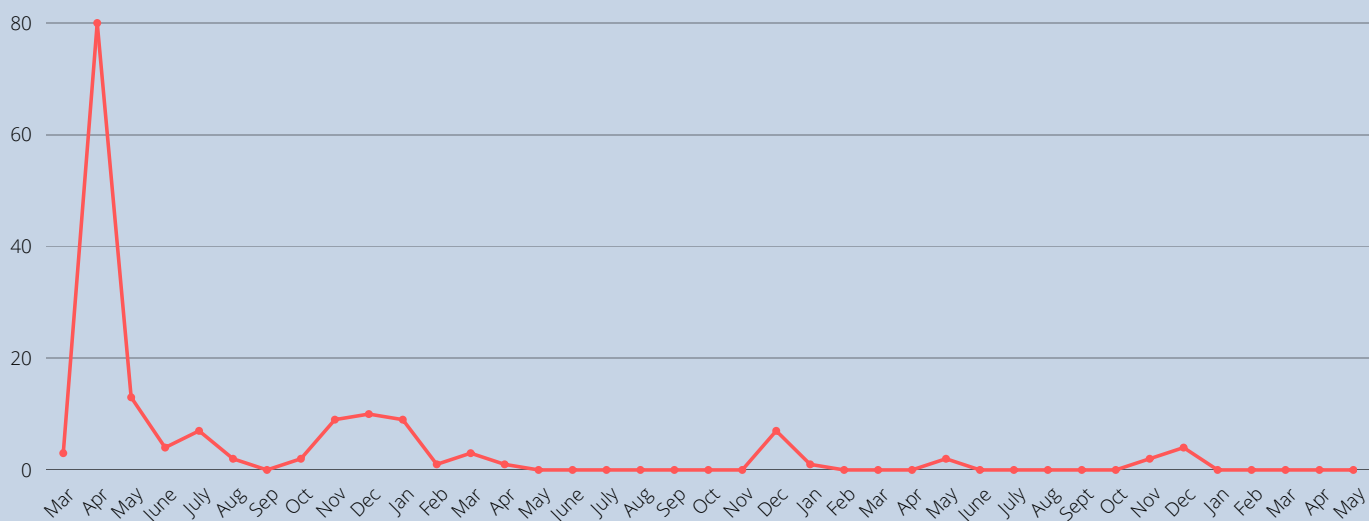
As of May 5, 2023, a total of 808 people receiving services from DDS were diagnosed with COVID-19.



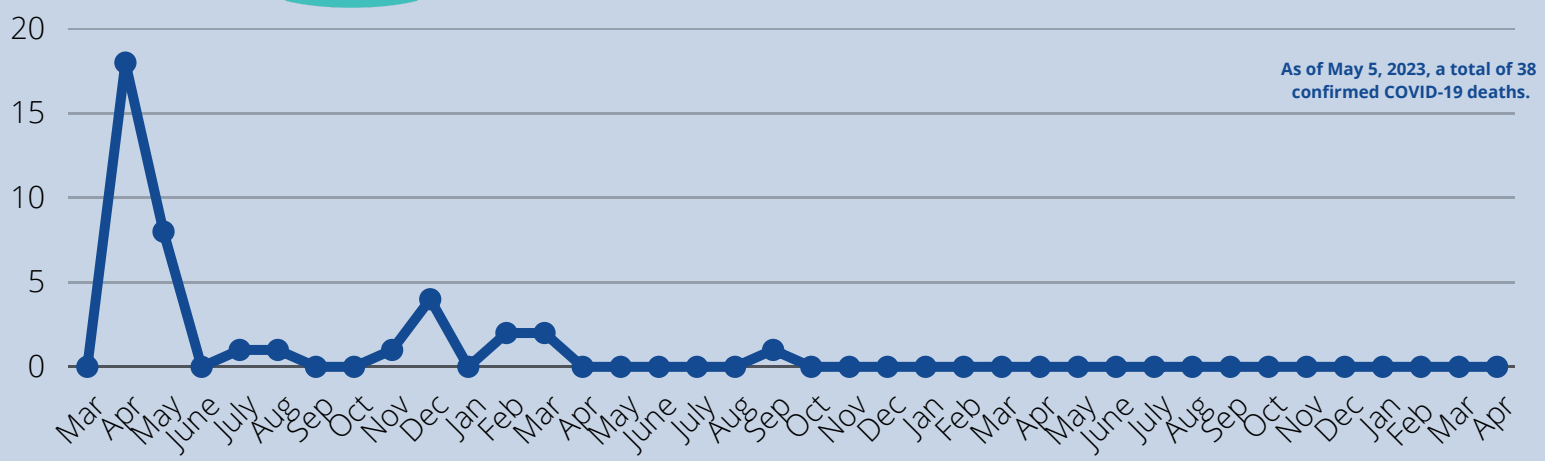
PEOPLE DIAGNOSED WITH COVID-19 BY PLACEMENT TYPE



PEOPLE WHO REQUIRED HOSPITALIZATIONS (N=144)



PEOPLE DIAGNOSED WHO HAVE CONFIRMED COVID-19 DEATH



As of May 5, 2023, a total of 38 confirmed COVID-19 deaths.

VACCINATION RATES

Vaccination Rates

- People Supported by DDA – 89% (updated 4/27/23)
 - Host Homes – 94%
 - ICF – 98%
 - Natural Homes – 75%
 - Residential Habilitation – 100%
 - Supported Living – 98%
- Vaccination – Boosters – 77% (updated 4/27/23)
- Provider Staff – 97% (updated 4/19/23)
- Provider Staff Eligible for Booster/Received Booster 73% (updated 4/19/23)
- DDS staff - 98% (updated 09/22/2022); Received Booster – 90%

