

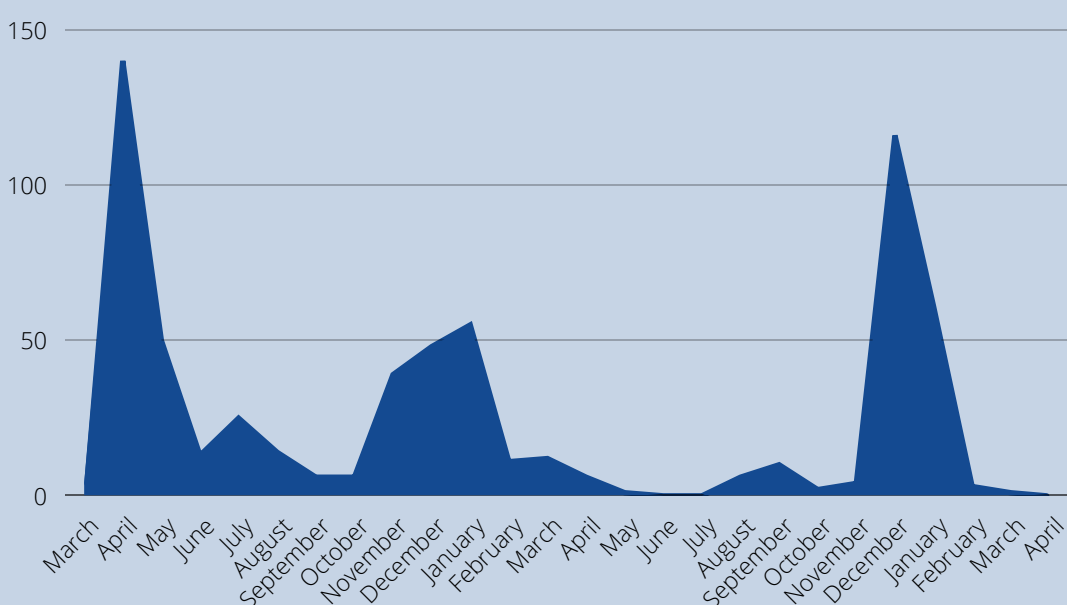
DDS COVID-19 DATA UPDATE

DATA COLLECTED FROM MARCH 2020 - APRIL 2022 ON PEOPLE RECEIVING SERVICES FROM DDS

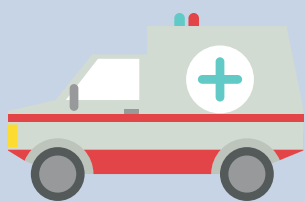
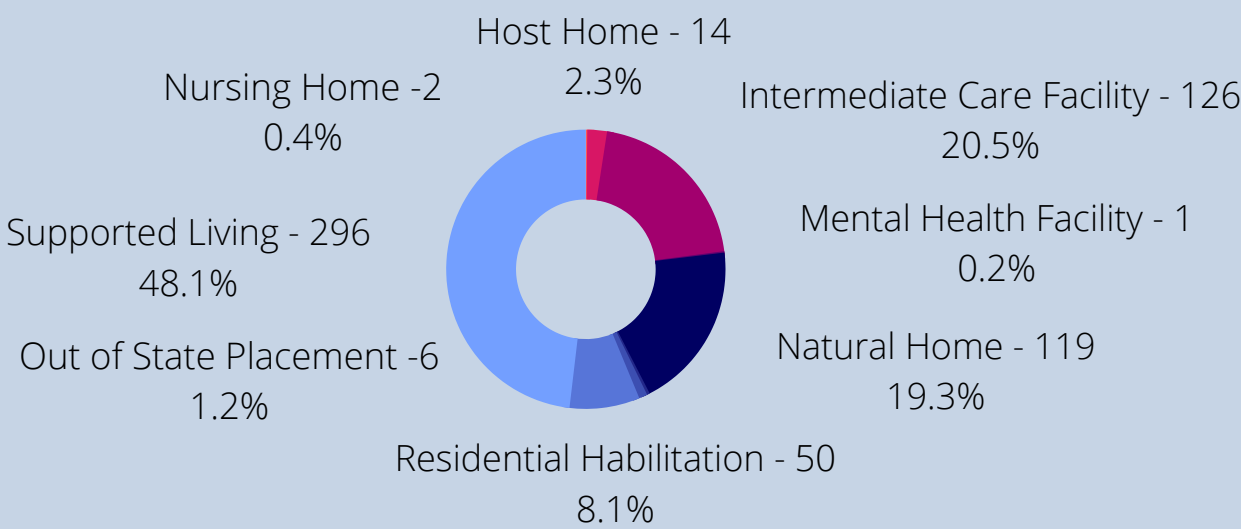


PEOPLE DIAGNOSED WITH COVID -19 BY MONTH

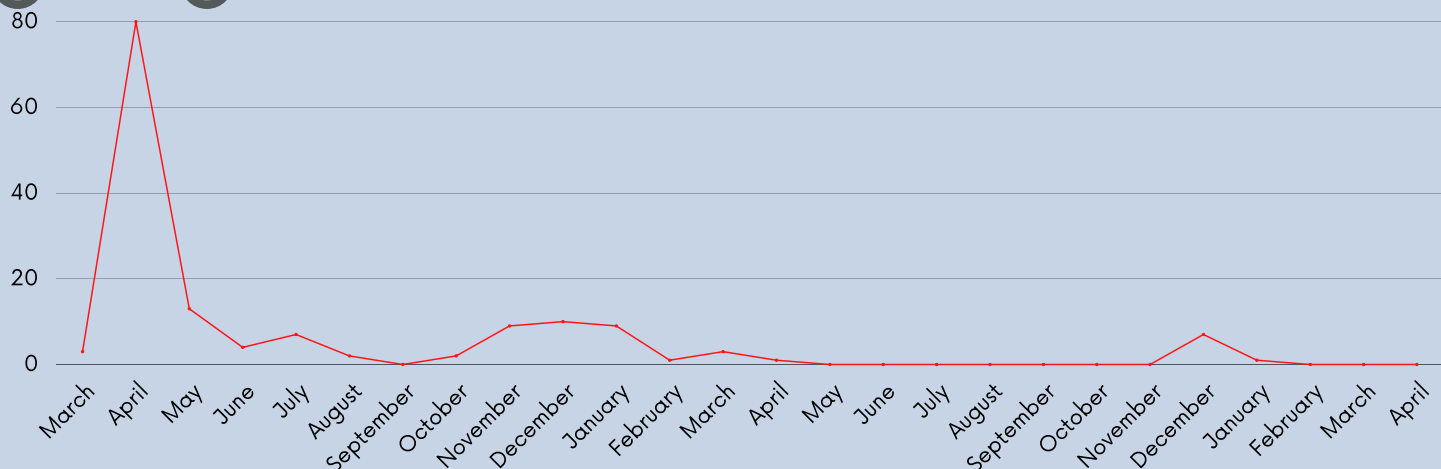
As of April 22, 2022, a total of 615 people receiving services from DDS were diagnosed with COVID-19.



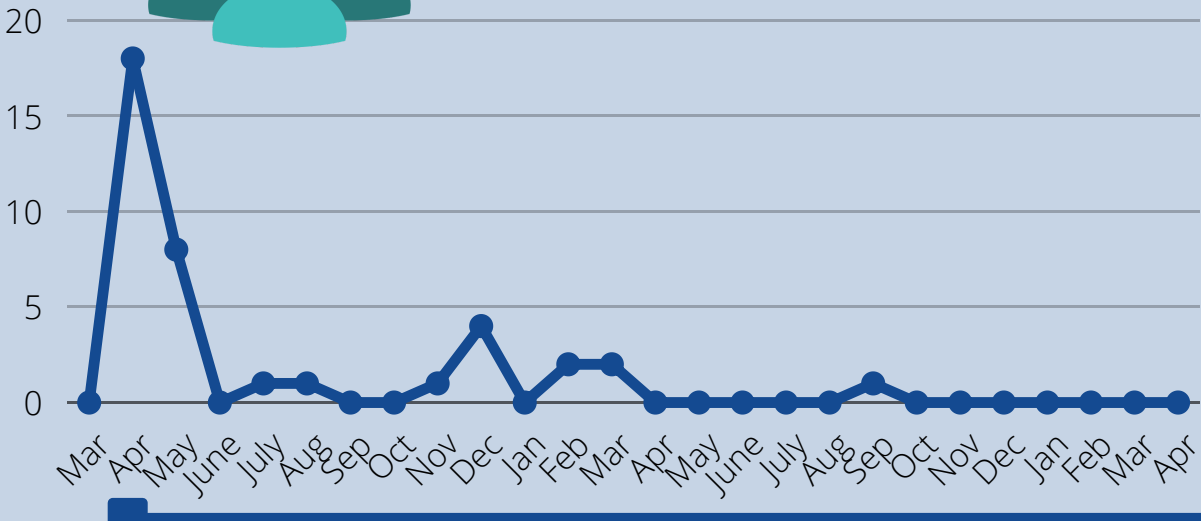
PEOPLE DIAGNOSED WITH COVID-19 BY PLACEMENT TYPE



PEOPLE WHO REQUIRED HOSPITALIZATIONS (N=144)



PEOPLE DIAGNOSED WHO HAVE CONFIRMED COVID-19 DEATH



As of April 22, 2022, a total of 38 confirmed COVID-19 deaths.

VACCINATION RATES

- People Supported by DDA – 87% (updated 04/21/22)
 - Host Homes – 97%
 - ICF – 99%
 - Natural Homes – 78%
 - Residential Habilitation – 100%
 - Supported Living – 93%
- Vaccination – Boosters – 77% (updated 04/21/22)
- Provider Staff – 96% (updated 04/21/2022)
- Provider Staff Eligible for Booster/Received Booster 66% (updated 04/21/2022)
- DDS staff - 97% (updated 04/06/2022); Received Booster – 95%

